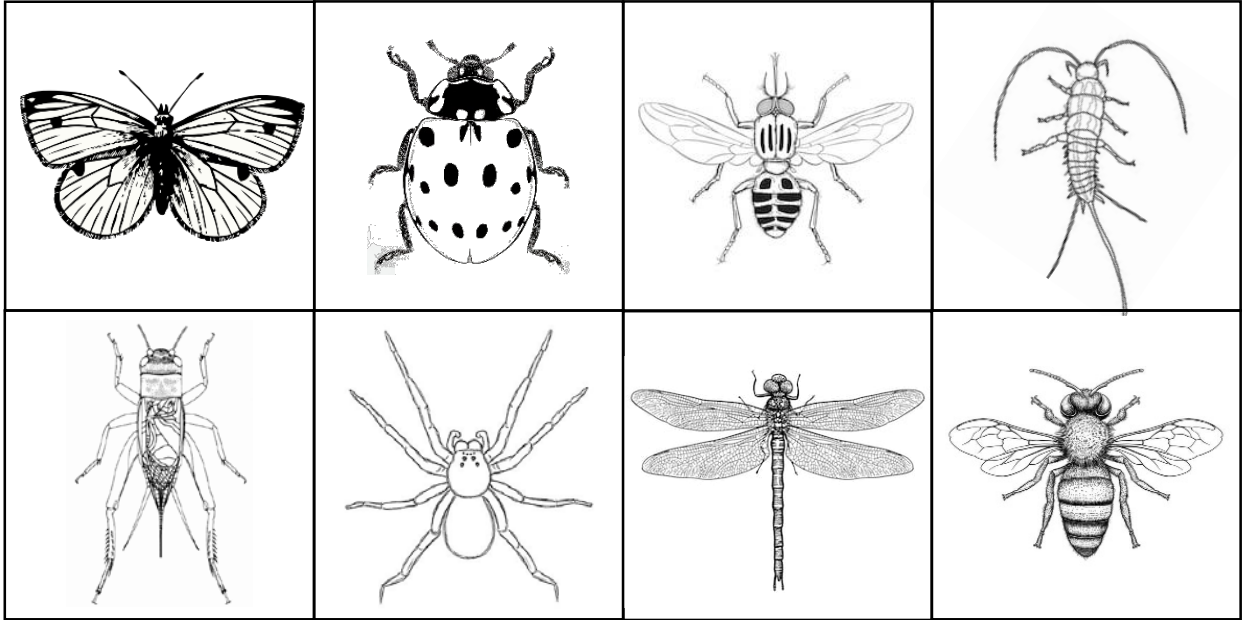


Insect Identification: Dichotomous Key

Scientists use *dichotomous keys* to help identify plants and animals. A dichotomous key is a series of YES or NO questions that we can answer by observing characteristics of living things until we have narrowed down its identity.

Choose an animal pictured below. Beginning with question 1, observe the creature and answer the question. Continue following along until you have successfully identified the animal. You can write the name of the insect beneath its picture.



1. Does the creature have 6 legs?
 - a. Yes.....go to step 2
 - b. No.....**Not an insect**

2. Does the insect have wings?
 - a. Yes.....go to step 3
 - b. No.....**Silverfish (Zygentoma)**

3. Does the insect have parallel wings? (wings that don't stick out to the side)
 - a. Yes.....go to step 4
 - b. No.....go to step 5

4. Does the insect have a parallel line down the back that divides the wings?
 - a. Yes.....**Beetle (Coleoptera)**
 - b. No**Grasshopper or cricket (Orthoptera)**

5. Does the insect have 4 total wings?
 - a. Yes.....go to step 6
 - b. No.....**Fly (Diptera)**

6. Does the insect have long antennae?
 - a. Yes.....go to step 7
 - b. No.....**Dragonfly (Odonata)**

7. Does the insect have a small body with large fan-shaped wings?
 - a. Yes.....**Butterfly or moth (Lepidoptera)**
 - b. No.....**Wasp, bee, or ant (Hymenoptera)**